

Commissioned for the Mass celebrated by His Holiness Pope John Paul II
in the Archdiocese of St. Louis, Missouri, January, 1999

Festival Alleluia

Assembly, Cantor, and Organ with opt. SATB Choir,
Brass Quartet/Quintet, Timpani, Suspended Cymbal, Flute, and Handbells

James Chepponis

Joyfully (♩ = 100)

Capo 3 (G) (B m⁷) (E m) (B m⁷) (C) (A m⁷) (D sus⁴) (D) (C/D) (D)
B^b D m⁷ G m D m⁷ E^b C m⁷ F sus⁴ F E^b/F F

Organ

f Play cue-size notes only in the absence of Brass

f *l. h.*

(Ped.) Ped.

6 (Cantor)

Al - le - lu - ia, al - le - lu - ia, al - le - lu - ia.

(G) (B m⁷) (E m) (B m⁷) (C) (A m⁷) (D sus⁴) (D) (C/D) (D)
B^b D m⁷ G m D m⁷ E^b C m⁷ F sus⁴ F E^b/F F

mf

10

Al - le - lu - ia, al - le - lu - ia, al - le - lu - ia!

(G) (B m⁷) (E m) (B m⁷) (C) (A m⁷) (G)
B^b D m⁷ G m D m⁷ E^b C m⁷ B^b

The English translation of the Gospel verses from the *Lectionary for Mass* © 1969, 1981, 1997, International Committee on English in the Liturgy, Inc. All Rights Reserved.

Available editions: Full Score MSM-80-847
Choir Score MSM-80-847A
Instrumental Parts (Brass/Handbells) MSM-80-847B
Reproducible congregational part included on page 7.

Copyright © 1999 Birnamwood Publications (ASCAP)
A division of MorningStar Music Publishers, Inc., St. Louis, MO
All rights reserved. Printed in U.S.A. 1.800.647.2117 www.MorningStarMusic.com
Reproducing this publication in any form is prohibited by law without the permission of the publisher.
The CCLI License does not give permission to copy this music.

Purchased by: Sr. Mary Henry, San Antonio, Texas 78209. You ordered 6 copies on 02/02/2022, order #56033.

Refrain (+ Assembly)*

14 *f*

Cantor
Assembly

Al - le - lu - ia, al - le - lu - ia, al - le - lu - ia.

Soprano
Alto

Al - le - lu - ia, al - le - lu - ia, al - le - lu - ia, al - le - lu - ia.

Tenor
Bass

f

(G) (B m⁷) (E m) (B m⁷) (C) (A m⁷) (D sus4) (D) (C/D) (D)
B^b D m⁷ G m D m⁷ E^b C m⁷ F sus⁴ F E^b/F F

Organ

f

18 *ff* *Last time to CODA* ⊕

Al - le - lu - ia, al - le - lu - ia, al - le - lu - ia!

ff *Last time to CODA* ⊕

Al - le - lu - ia, al - le - lu - ia, al - le - lu - ia!

ff Al - le - lu - ia, al - le - lu - ia, al - le - lu - ia!

Last time to CODA ⊕

(G) (B m⁷) (E m) (B m⁷) (C) (A m⁷) (G)
B^b D m⁷ G m D m⁷ E^b C m⁷ B^b

*The choir should sing in unison with the assembly the first time the refrain is sung.

Verse(s)

22

Cantor *mf*

- 1. O Lord, o - pen our
- 2. If to - day you hear his
- 3. Your words, O Lord, give joy to my
- 4. Your word is a lamp for my
- 5. Your word, O Lord, is
- 6. I wait for the
- 7. ♪ Shine like lights in the

Choir optional

mp

- 1. O
- 2. If to -
- 3. Your
- 4. Your
- 5. Your
- 6. I
- 7. ♪

Choir optional

mp

(G) (D m⁷) (G) (D m⁷) (G) (D m⁷)
 B^b Fm⁷ B^b Fm⁷ B^b Fm⁷

mf

25



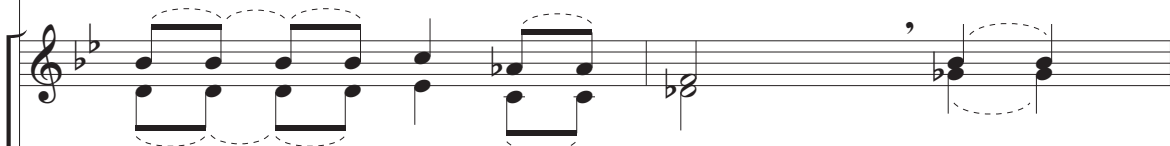
hearts
 voice,
 heart;
 feet
 truth;
 Lord;
 world

to
 O
 your
 and
 make
 my
 as

lis - ten
 hard - en
 teach - ing
 light
 ho - ly
 soul
 hold

to the
 the words
 ing is
 on my
 in the
 waits
 to the

of your
 your
 not your
 light to
 my
 the
 for his
 word of



Lord,
 day
 words,
 word,
 wait
 Shine

you
 O Lord,
 is a
 O Lord,
 like

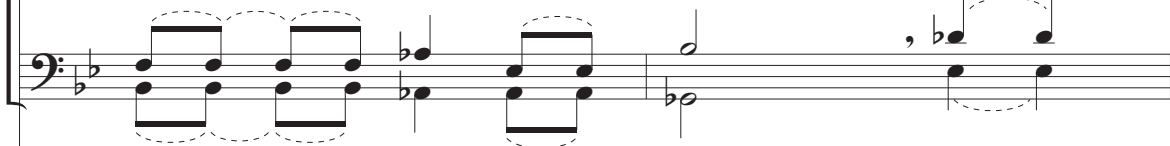
o - pen
 hear
 give joy
 for my
 for the
 lights

our
 his
 to my
 for my
 the
 in the

hearts
 voice,
 heart;
 feet
 truth;
 Lord;
 world

to
 O
 your
 and
 make
 my
 as

you



(G) B \flat (D m⁷) F m⁷ (E \flat maj⁷) G \flat maj⁷ (C m⁷) E \flat m⁷



Purchased by: Sr. Mary Henry, San Antonio, Texas 78209. You ordered 6 copies on 02/02/2022, order #56033.

Purchased by: Sr. Mary Henry, San Antonio, Texas 78209. You ordered 6 copies on 02/02/2022, order #56033.

27

Son,
hearts,
eyes,
path,
truth,
word,
life,

your
your
my
my
the
his
of

Son.
hearts.
eyes.
path.
truth.
word.
life.

lis - ten to the words
hard - en - not
teach - ing is light
light - on
ho - ly in
soul - ly in
hold on to the word
waits for his
word of life.

of your Son.
your hearts.
to my eyes.
my path.
the truth.
for his word.
of life.

(D)
F

(C m7)
Ebm7

(D sus4)
F sus4

(D)
F

⊕ CODA

29

allargando

ia!

⊕ CODA

fff *allargando*

ia! Al - le - lu - ia, al - le - lu - ia, al - le - lu - ia!

fff *allargando*

⊕ CODA

(G) (E \flat) (Cm) (G)
B \flat G \flat E \flat m B \flat

Refrain

*Commissioned for the Mass celebrated by His Holiness Pope John Paul II
in the Archdiocese of St. Louis, Missouri, January, 1999*

Festival Alleluia

James Chepponis

Al - le - lu - ia, al - le - lu - ia, al - le - lu - ia.

Al - le - lu - ia, al - le - lu - ia, al - le - lu - ia!

Copyright © 1999 Birnamwood Publications (ASCAP)
A division of MorningStar Music Publishers, Inc., St. Louis, MO
All rights reserved. Printed in U.S.A. 1.800.647.2117 www.MorningStarMusic.com

The Refrain may be reproduced for congregational use provided the above copyright notice is included.